

THE SUMMIT

THURSDAY, SEPTEMBER 23, 2010, SERVING EASTHAMPTON, WESTHAMPTON AND SOUTHAMPTON • PUBLISHED WEEKLY BY THE DAILY HAMPSHIRE GAZETTE

Memorial playground Family funds Treehouse project

By **MATT PILON**
Staff Writer

EASTHAMPTON — Dozens of residents and student volunteers pitched in this month at the Treehouse at Easthampton Meadow adoptive and foster community to construct a new playground.

The funky green and purple playground that now sits behind Treehouse's community center contains a swingset, slide and climbing bars.

Treehouse is planned, intergenerational community of families with adoptive children and elderly residents seeking to spend time with children.

The playground was paid for by the Victoria Snelgrove Memorial Fund.

The fund was created in memory of Victoria "Torie" Snelgrove, a college student who was accidentally killed

*I just think it's great
when people
come forward
and offer things
and make good
out of very
difficult experiences.*

*Kerry Homestead,
Treehouse coordinator*

in 2004 by a police pepperball during a celebration in Boston after the Red Sox won the World Series. Her parents have used the money from a \$5.1 million settlement with the city of Boston to fund scholarships and various projects around the state, including three other playgrounds.

Snelgrove's parents, Richard and Dianne Snelgrove, drove out on Sept. 10 from

their home in East Bridgewater to pitch in.

Dianne Snelgrove said in an interview this week that she heard about Treehouse through a mutual friend who was considering building a similar community in eastern Massachusetts.

The foundation has a broad mission of "enhancing the lives of others" in memory of their daughter, who Snelgrove described as a giving person who took time to listen to her friends and who did chores around the house for her parents without being asked.

Snelgrove said she and her husband jump at any chance they get to tell people about Torie, which she was able to do this month in Easthampton.

"This is our daughter's memory," she said. "We just

■ See **PLAYGROUND**/Page 2

FARM TOUR

Mountain View Farm offers a tour with information about crop rotation, cover crops, and cultivation.

REACHING HIGHER

Easthampton High School reports more students opting for Advanced Placement classes.

All this and more inside.



KEVIN GUTTING

Fred King, top, of Northampton attaches a swing with help from his father, Won Yong Kim, left, and Vern Wilkinson, both residents of the Treehouse community, while helping to build a playground there earlier this month.

The Summit

The Summit is a community newspaper serving Easthampton, Southampton and Westhampton. It is published weekly and distributed on Thursday with the Daily Hampshire Gazette in those communities.

How to reach us

The Summit office is at 67 Main St., Easthampton, MA 01027

Phone: 527-4000

E-mail: summitnews@gazettenet.com

The Summit staff

Editor

Nicole Cusano

Writers

Matthew Pilon

Owen Boss

Keri Ann Aubin

We want your news

We welcome news items and story ideas submitted by readers. Please send us event listings, social, business, sports and school news and other items of community interest.

Submissions may be made by e-mail to summitnews@gazettenet.com or sent to the Gazette office, 67 Main St., Easthampton. News items may be edited.

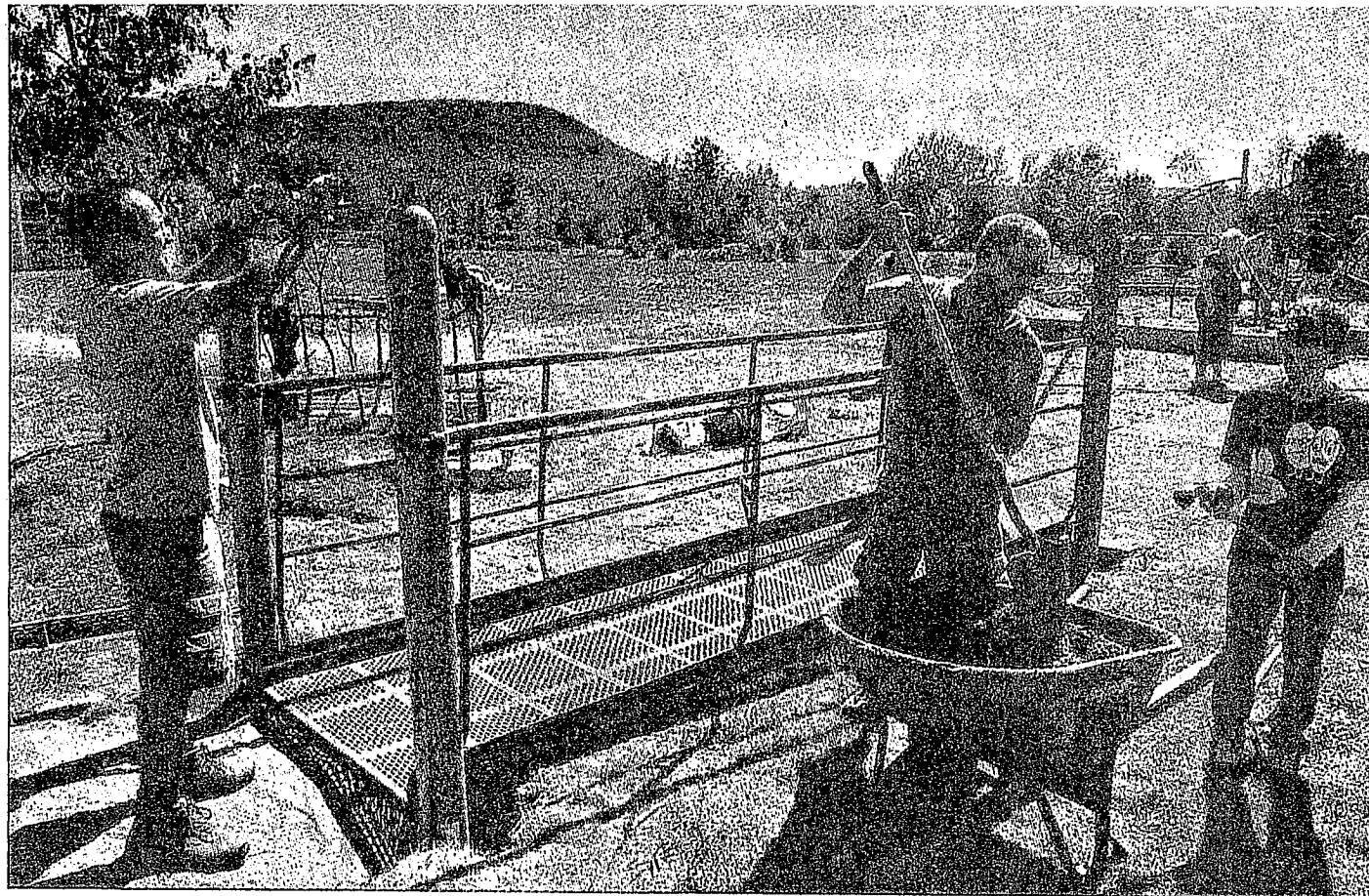
The deadline is Thursday at noon the week before publication.

Advertising

For rates and advertising information, call 584-5000.

Subscriptions

For home delivery of the Daily Hampshire Gazette and The Summit contact the Gazette circulation department at 586-1925.



Michael Haning, left, and Gordon Yelle, both of Northampton, and Alex O'Boyle, 10, of Easthampton, work on a small bridge structure while helping to build a playground at Treehouse Community in Easthampton recently. O'Boyle's grandmother, Beth Coombs, works at Treehouse. Below, Treehouse resident Richard Sedlakbolts together a play structure.

KEVIN GUTTING

Playground

■ Continued from Page 1

want to be there and do what we can."

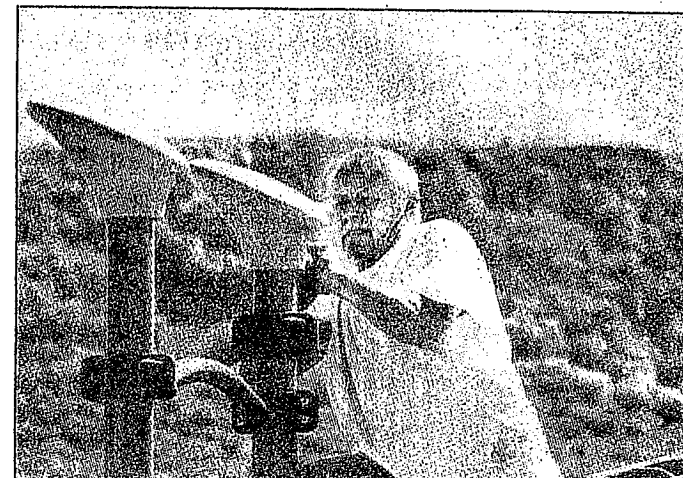
A plaque installed at the Treehouse site bears their daughter's name.

Treehouse Community Coordinator Kerry Homstead said the Snelgroves had to wake up at 4 a.m. in East Bridgewater

to make it to Easthampton for 7 a.m.

"They participated fully," Homstead said. "I just think it's great when people come forward and offer things and make good out of very difficult experiences. It's a very powerful thing."

Matt Pilon can be reached at mpilon@gazettenet.com.



SOUTHAMPTON
\$263.000

SOUTHAMPTON
\$200.000